

## A novel approach for the isolation and characterization of micro-cellulose from *Caesalpinia Bonduc* (L.) roxb. Hard nutshells

Bamgbola AA<sup>1\*</sup>, Adeyemi OO<sup>2</sup>, Olubomehin OO<sup>3</sup>, Aknilabi AK<sup>4</sup>, Sojinu OS<sup>5</sup>, Iwuchukwu PO<sup>6</sup>

<sup>1</sup> Department of Chemistry, Federal University of Agriculture, Abeokuta, Ogun State, Nigeria

<sup>2,3</sup> Department of Chemical Sciences, Olabisi Onabanjo University, Ago- Iwoye, Ogun State, Nigeria

<sup>4,5</sup> Department of Chemistry, Federal University of Agriculture, Abeokuta, Ogun State, Nigeria

<sup>6</sup> Department of Pure and Applied Zoology, Federal University of Agriculture, Abeokuta, Ogun State, Nigeria

### Abstract

The industrial use of plant matter for cellulose production shortens the scarce available flora that could be employed for other wants, hence, there is need for alternative source for producing cellulose to meet industrial demands. Cellulose was produced using a modified acid hydrolysis, alkali and bleaching treatments on dewaxed *Caesalpinia bonduc* hard nutshells (CBHNS). The micro-morphology, chemical functional groups, crystallinity and thermal stability of the resulting cellulose were characterized using the SEM, FTIR spectroscopy, X-ray diffractometry and thermogravimetry. The applied treatment protocol on CBHNS resulted in a whitish rod-like micro crystalline cellulose devoid of hemicellulose and lignin, with a crystallinity index of 87.5% in a temperature range of 240 – 470 °C. These observations show that CBHNS could be repurposed for cellulose production.

**Keywords:** Cellulose; *Caesalpinia*; Hard nutshells; Crystalline; Acid hydrolysis

### 1. Introduction

The continuous rise in ecological degradation and environmental hazard has spiked the need to source for renewable natural resources (Harini, *et al.*, 2018) [17]. Research works such as Moreau *et al.* (2016) [37] and Kontturi *et al.* (2018) [29] have shown that cellulose found in the plant matter is an excellent renewable matter. Cellulose is characterized by a long chain polymer containing β-glucopyranosyl linked together to form an amorphous or crystalline microstructure. Oliveira *et al.* (2016) [42] recounted that the inherent characteristics of cellulose is governed by the properties of the source and adopted extraction protocol. The potential use of cellulose has been shown in various industries such as food, paper, biomedical and pharmaceutical industries (Lavoine *et al.*, 2012 and Henrique *et al.*, 2013) [30, 18]. In the advent of nanotechnology, nanocellulose extracted from cellulose has a more promising advantage because of its large surface area, hydrophilic nature and high crystallinity (Klemm *et al.*, 2011) [28]. Also, it is most desirable for synthesizing nano-materials with Ye *et al.* (2015) [63] and Song *et al.* (2020) [60] reporting nano-cellulose crystals as best for reinforcing agent, while Eyley *et al.* (2012), Yu *et al.* (2013) and Li *et al.* (2015), have shown that nanocellulose could be used as rheological modifier, nanocomposites and for electronic components respectively.

Currently, numerous studies have reported nano-cellulose extraction from wood (Inamochi *et al.*, 2017 and Rajinipriya *et al.*, 2018) [22, 48], cotton plant (Hsieh, 2013 and Saraiva Morais *et al.*, 2013) [20, 55], corn straw (Hernandez *et al.*, 2018), coconut shell (Wan *et al.*, 2015), grape skin (Lu and Heish, 2012) and banana rachis (Elanthikkal *et al.*, 2010) [9]. Similar to cellulose, the distinct characteristics such as its physical, chemical and thermal stability of extracted

nanocellulose is a function of the raw material and extraction methodology applied (Sacui *et al.*, 2014 and Deepa *et al.*, 2015) [52]. Numerous research studies have reported cellulose isolation from plant matter using hydrolysed concentrated mineral acid such as sulphuric, hydrochloric or phosphoric acids (Rosli *et al.*, 2013; Song *et al.*, 2019) which could easily degrade or volatilize sample during reaction. However, modifying the acid process, it is possible to obtain cellulose with higher solubility index using lesser quantity of mild mineral acids.

*Caesalpinia bonduc* (L.) Roxb. Is a widely distributed shrub, found mostly in the tropics and subtropical regions of Africa, Asia and Caribbean (Billah *et al.*, 2013 and Ogunlana *et al.*, 2015) [4, 41]. Vast number of researchers have termed the plant to be highly medicinal as compounds such as glycosides, alkaloids, flavonoids in the roots, barks and leaves are being reported to be bioactive phytoconstituents (Sandhia and Bindu, 2015; Shivaprakash *et al.*, 2016) [54, 58]. Nazeerullah *et al.* (2012) [39] showed that *caesalpinia bonduc* extract have shown anti-diarrhoeal, and anti-inflammatory activities, while Sukhdev *et al.* (2011) [61] reported that the root bark has antifertility effects. Despite of these numerous studies on this *caesalpinia bonduc*, still the waste hard nutshell remains unexploited especially for the production of useful cellulose. This study aims to isolate cellulose from *caesalpinia bonduc* hard nutshells (CBHNS) and characterize the morphology, chemical functional groups and thermal stability.

### Materials and Methods

#### Dewaxing *Caesalpinia bonduc* hard nutshells (CBHNS)

The CBHNS used for this study were collected at Kowo village along Abeokuta/ Sagamu expressway, Ogun state, Nigeria. Waste hard nutshells of *caesalpinia bonduc* were

used for demarcating farmland, as well as for laying indigenous leisure game called "Ayo" by some elderly. CBHNS were handpicked and washed to remove debris, after which they were dried in the oven. Dried nutshells were pulverized and sieved using a mesh size of 60  $\mu\text{m}$  to obtain equilibrium weight and size. Wax, phenols pigments and oil were removed from the pulverized CBHNS by mixing the sample with a 2:1 (v/v) mixture of toluene and ethanol in a Soxhlet apparatus for 20 hours continuously, after which, the samples were dried in oven at 70  $^{\circ}\text{C}$  for 24 hours.

#### Proximate Composition of *Caesalpinia bonduc* Hard Nutshells

Proximate analysis of the dewaxed CBHNS was done using the non-destructive near-infrared reflectance spectroscopy technology, while, the elemental composition in the dewaxed CBHNS was done using the protocols of the Association of Analytical Chemistry (2000). Powdered CBHNS were digested in a fume board. Atomic Absorption Spectrophotometry was used to obtain the elemental (Fe, Zn, Cu, Mg, Mn, Pb, Co, Ni, Ca, K, Na, Cd) percent in the digester.

#### Cellulose Isolation from Dewaxed *Caesalpinia bonduc* Hard Nutshells

100 g dried dewaxed CBHNS were firstly treated with modified acid hydrolysis, which involves the use of 7% of nitric acid for 2 hrs at controlled room temperature of 90  $^{\circ}\text{C}$  in a 5 L reaction flask with constant stirring (Faithful SH4C Hotplate magnetic stirrer). The obtained slurry was washed continuously until the filtrate was neutral to litmus.

The neutral filtrate was then treated with 17.5% sodium hydroxide (NaOH) for 2 h 30 min at 70  $^{\circ}\text{C}$  with constant stirring. The resulting residue was also washed severally until the residue was neutral to litmus.

The residue was bleached with 3.5% (v/v) hypochlorite solution (NaOCl) at 80  $^{\circ}\text{C}$  with continuous stirring for 30 min. The process was repeated until white cellulose was obtained. The cellulose isolated was then filtered using sintered glass crucible, No. 2, air dried for 5 days and then milled to fine cellulose powder.

#### Cellulose Characterization

##### Scanning Electron Microscopy (SEM).

Cellulose nano-crystals in water (CNCwater) and tert-butanol (CNCTBA) were mounted on substrates with fixed conductive carbon tape and then sputter-coated with gold. Photomicrograph was taken by field emission scanning electron microscope (FE-SEM) (XL 30-SFEG, FEI/PHILIPS, USA) at a 5 –mm working distance and 5 –kV accelerating voltage.

##### Fourier Transform Infrared Spectroscopy (FTIR)

The FTIR spectra of dewaxed *Caesalpinia bonduc* and hard nutshells were treated with transparent KBr pellets (1:100, w/w) were obtained from a Bulk M530 spectrophotometer. The spectra were collected at ambient conditions in the transmittance mode from an accumulation of 128 scans at a 4  $\text{cm}^{-1}$  resolution over the regions of 4000 – 400  $\text{cm}^{-1}$ ,

#### X-ray Diffraction (XRD).

The XRD analysis was performed on dewaxed CBHNS flour and isolated cellulose from CBHNS using a diffractometer Angstrom Advanced ADX2700 powder X-ray diffractometer equipped with a graphite-monochromatic Cu K $\alpha$  radiation source at 40 kV and 30 mA. The diffraction intensities were recorded in the  $2\theta = 5^{\circ} - 70^{\circ}$  with a step size of 0.3 and a scan speed of 0.05 /sec. The XRD pattern was processed using JCPDS card numbers, while the Segal *et al.* (1959) formula was used to calculate the crystalline index (CrI)

$$\text{CrI} = \frac{l_{200} - l_{am}}{l_{200}} \times 100$$

Where  $l_{200}$  is the maximum intensity of the diffraction at 200 peaks ( $2\theta=22.248$ ) and  $l_{am}$  is the intensity of the diffraction at  $2\theta=12.2881$ .

#### Thermogravimetric Analysis (TGA)

Thermal stability of isolated cellulose sample obtained from CBHNS were evaluated using a TGA-4000 thermogravimetric analyzer (Perkin Elmer, Netherland) from 30  $^{\circ}\text{C}$  to 950  $^{\circ}\text{C}$  at a rate of 10  $^{\circ}\text{C}/\text{min}$  under purging nitrogen atmosphere (50 mL/min).

#### Results and Discussion

Table 1 presents the percentage composition of Ash (3.4), fibre (23.61) and moisture (10.19) in *Caesalpinia bonduc* hard nutshells reported in this study. These results were higher than that observed in the seeds reported in Adeleke *et al.* (2019) [1], which measured 2.96, 12.54 and 7.89 respectively. The reported ash composition is slightly higher than 1.5 -2.5% recommended range reported by Pomeranz and Clifton (1981), however, it is known that ash is an indicator for the presence of inorganic minerals in a sample. Thus, CBHNS can be recommended in animal dietary feeds as it can supply 3.4% of inorganic compound for the animal. Furthermore, the fibre concentration in CBHNS can acts as valuable source dietary fibre in animal nutrition. Also, the cellulose concentration (36.87) in the dewaxed CBHNS showed that over one-quarter of this agro waste matter can be used as a valuable source of cellulose crystal production. This can in turn lead to a possible exploration of a sustainable *Caesalpinia bonduc* farming. The mineral composition of CBHNS depicts that the nut is rich in mineral as shown in Table 2. The Calcium (34.76%), potassium (79.11%), Sodium (38.24%) and Iron (10.86%) were highest in this study, similar result was documented for *Caesalpinia bonduc* seeds in Manikandaselvi *et al.* (2016) [35] for the same mineral elements. These mineral are essential minerals needed for daily living in animals. Animal feeds containing the dewaxed CBHNS can improve potassium and sodium ion concentration in animals, thereby helping the cell membrane  $\text{Na}^+/\text{K}^+$  pump more fortified, while calcium will improve the skeletal system of the body. Manganese (0.15), copper (0.09) and zinc (0.66) are also essential heavy metals for proper functioning of the antioxidant system of the body (Zorrodou *et al.*, 2019).

**Table 1:** Percentage Proximate Composition of *Caesalpinia bonduc* Hard Nutshells

Parameter	Composition (%)
Dry Matter (DM)	89.81
Moisture Content (MC)	10.19
Ash	3.4
Crude Protein	4.17
Crude Fibre	23.61
Metabolizable Energy (MJ/Kg)	7.05
Cellulose	36.87
Hemicellulose	27.23

**Table 2:** Percentage Composition of Elements in the Dewaxed *Caesalpinia bonduc* Hard Nutshells

Elements	Composition (%)
Calcium (Ca)	34.77
Magnesium (Mg)	11.43
Potassium (K)	79.11
Sodium (Na)	38.24
Manganese (Mn)	0.15
Iron (Fe)	10.86
Copper (Cu)	0.09
Zinc (Zn)	0.66
Cobalt (Co)	0
Cadmium (Cd)	0
Lead (Pb)	0
Nickel (Ni)	0

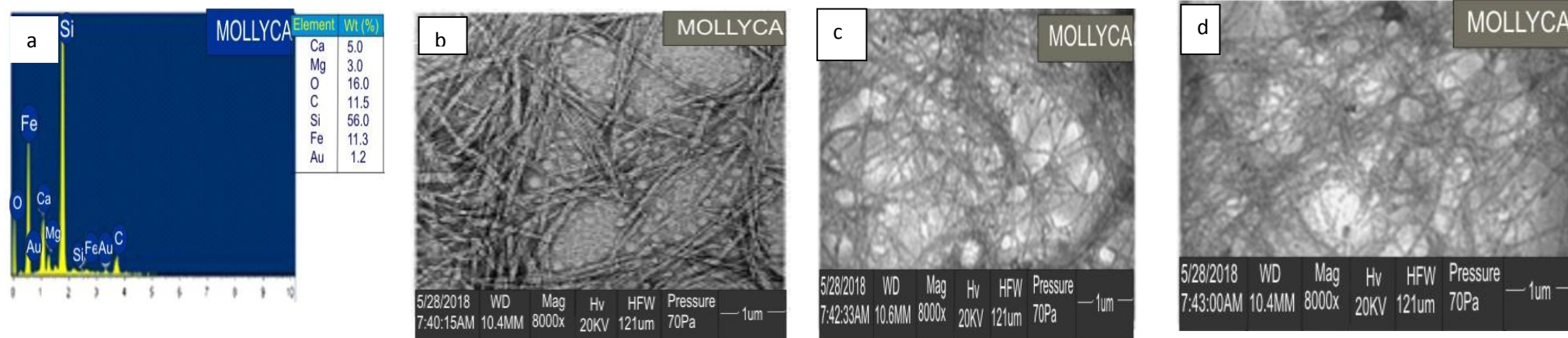
The rod-like morphologies of isolated cellulose under a magnification of 8000 is presented in figure 1 (a-c). Figure 1a showed tightly packed micrograph structure depicting degrading of impurities such as lignin as a result of alkali treatment. Elazzouzi-Hafraoui *et al.* (2008) [10] reported that acid treatment transforms the amorphous matter into long and dis-ordered needles with bundle formation arising from interatomic forces like hydrogen bonds. On the other hand, figures b and c showed loose micro-fibril structures, implying that both acid treatment and bleaching using 3.5% hypochlorite solution (NaOCl) effectively remove macromolecular impurities affecting the overall fibre surface (Johar *et al.*, 2012) [23]. Nascimento *et al.* (2014) reported that the bleaching process induced the formation of pits on the isolated cellulose structure, hence increasing surface area and ease the acidic hydrolysis of carbohydrates. Figure 3 presents the EDX spectra emphasizing some quantifiable per cent of inherent elemental such as Ca (5.0), Mg (3.0), O (16.0), C (11.5), Si (56.0), and Fe (11.3) after CBHNS have successfully undergone bleaching. These elements are easily metabolizable because they are of the organic source.

The X-ray diffraction pattern presented in figure 2 is known to display a typical crystal lattice of the cellulose. Significant peaks such as the intensity of the diffraction at  $2\theta=12.2881$  and  $l_{200}$  is the maximum intensity of the diffraction at 200 peaks ( $2\theta=22.248$ ). The observed peaks on the crystallographic plane shown in the XRD spectra 110, 200 and 004 indicates that the inherent cellulose structure in the CBHNS was not altered despite the different treatment protocol used for this study (Marett *et al.*, 2017) [36]. The maximum intensity of diffraction obtained in this study is similar to that obtained for cellulose nano-whiskers obtained from oil palm biomass and cellulose nanocrystals extracted from *Calotropis procera* documented in Haafiz *et al.* (2014) [16] and Song *et al.* (2019) respectively. De Menezes *et al.* (2009) [6] and Rosa *et al.* (2012) reported that

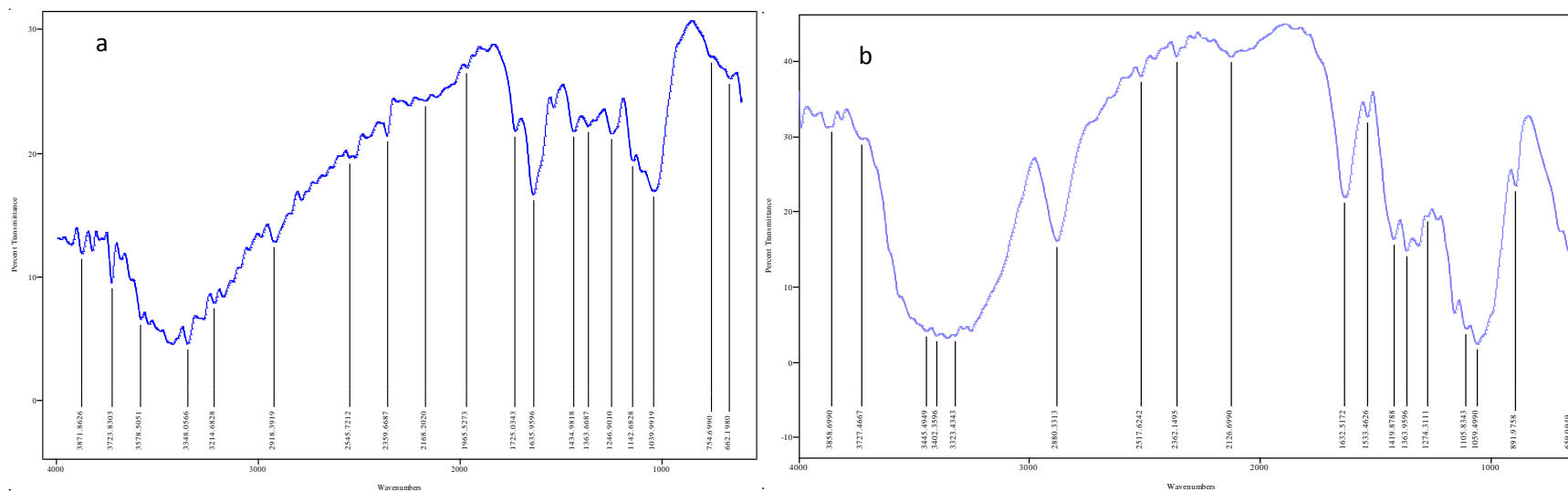
these peaks are typically crystal lattice. The crystalline index of isolated cellulose from the CBHNS is 87.5%. The present crystalline index is higher than that reported for date palm biomass waste (52.27%) in Galiwango *et al.* (2019), on the other hand, the reported crystalline index is comparable to that obtained for nano-cellulose crystals obtained from white coir (82%) and *Agave tequilana* bagasse (80%) in Nascimento *et al.* (2014) and Hernandez *et al.* (2018) respectively, attributing these level of crystallinity to the removal of non-crystalline components, similarly, Robles *et al.* (2018) [50] attributed transformation of amorphous cellulose I to cellulose II to the acid hydrolysis process.

The figures 2a and 2b present the infrared spectra for the dewaxed and isolated cellulose from CBHNS. The shoulder peak at  $1039\text{ cm}^{-1}$  in the dewaxed sample is comparable with  $1031\text{ cm}^{-1}$  reported in Chumee and Seeburin (2014) [5], which is indicative of the stretching vibration of OCH-OCH<sub>2</sub> (Rachtanapun, *et al.*, 2012) [47]. Peak corresponding to  $1105\text{ cm}^{-1}$  is known to be due to the distortion of C-H rocking vibration and the C-O-C pyranose, hence, effective removal of hemicellulose and lignin units, giving a purer cellulose (Kargarzadeh *et al.*, 2012) [26]. The peak intensity at  $1246\text{ cm}^{-1}$  is significantly higher in the dewaxed CBHNS, compared to the isolated cellulose obtained from the bleached CBHNS. The transmittance peak at  $1274\text{ cm}^{-1}$  observed in the bleached CBHNS sample is comparable to  $1275\text{ cm}^{-1}$  observed in Ranganagowda *et al.* (2019) [49] for commercial cellulose used in their study, they linked these peak to C-O bending vibration in the cellulose in the analysed samples.

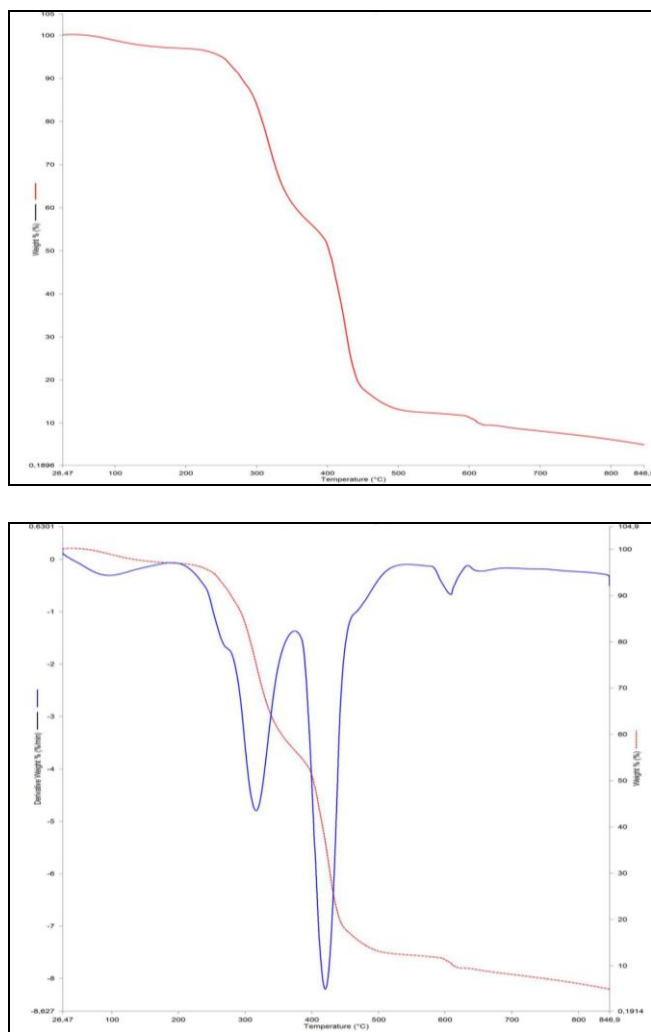
The notable peak at  $1419\text{ cm}^{-1}$  in the bleached CBHNS is within the  $1417\text{-}1429\text{ cm}^{-1}$  range reported to be attributed to CH<sub>2</sub> bending (GAO *et al.*, 2014). Transmittance peaks at  $1725\text{ cm}^{-1}$  is linked to the C=O acetyl group of hemicellulose ester or carbonyl ester of the lignin unit (Nazir *et al.*, 2012) [40] in the dewaxed sample which was found to be absent in the bleached CBHNS. This implies that treatment methods used in this study removed hemicellulose impurities in the sample. The shoulder observed at  $2918\text{ cm}^{-1}$  observed in the dewaxed CBHNS is comparable to  $2924\text{ cm}^{-1}$  in Kaushik and Singh (2011) attributing this peak to stretching vibration of C-H in the hemicellulose and lignin. (Galiwango *et al.*, 2019). The appearance of absorption peaks at  $3402\text{ cm}^{-1}$  which corresponds with the report of Galiwango *et al.* (2019), which stated that broad absorption peaks at  $3400\text{ - }3500\text{ cm}^{-1}$  is attributed to the stretching vibration of OH groups with hydrogen bonding groups, while, bands at  $1632\text{ cm}^{-1}$  is comparable to  $1645\text{ cm}^{-1}$  which is linked to OH bending in water (Jonobi *et al.*, 2011 and Johar *et al.*, 2012) [23]. The bands at  $2918\text{ cm}^{-1}$  in both dewaxed sample and bleached samples implies that various treatment protocols used did not affect the chemical structure of the cellulose as opined by Saelee *et al.* (2016). On the other hand, peak observed at  $1725\text{ cm}^{-1}$  seen in the dewaxed sample is absent in the bleached sample, Esmail *et al.* (2018) [11] reported that these peaks correspond to the C=O of acetyl and uronic ester groups of hemicellulose or ester linkages of carboxylic group of ferulic and  $p$ -coumaric acids of lignin and/or hemicelluloses; an indication that treatment protocol used progressed in removing non-cellulosic materials. The result showed variance in percentage transmittance in both dewaxed and bleached samples, this observation



**Fig 1:** a- EDX monograph of bleached CBHNS (isolated cellulose). Scanning electron micrograph of tightly packed micro-fibrillated cellulose (b- alkali treated CBHNS) and loosely rod-like structured cellulose (c and d- bleached CBHNS)



**Fig 2:** FTIR spectra of dewaxed *Caesalpinia bonduc* (a) and bleached *Caesalpinia bonduc* sample (b)



**Fig 3:** TGA curve for the bleached CBHNS

corresponds with the reports of Gonzalez *et al.* (2014) which showed that the higher the transmittance percentage, the higher the transparency and cellulose fibers.

Investigating the thermal properties of cellulose is an important factor for its applicability in reinforcement or other industrial use (Flauzino *et al.*, 2013)<sup>[12]</sup>, furthermore, Atiqah *et al.* (2019)<sup>[3]</sup> reported that the chemical composition, structure and degree of crystallinity play significant role in thermal stability of isolated cellulose. The thermogravimetric analysis (TGA) and derivative thermogravimetric (DTG) curve of the isolated cellulose is presented in figures 3a and 3b respectively. TGA curve showed an initial weight loss of 6% in the sample, Julie *et al.* (2016) reported that weight loss is attributed to evaporation of moisture in samples, chemisorbed water bound inside samples and/or compounds of low molecular weight. The presence of water molecules has been previously affirmed using the FTIR result. Degradation process was found to have occurred in two phases: the first phase of decomposition occurred at 280 °C and 300°C. This is comparable to 271.7 °C reported in Li *et al.* (2014) for cellulose nano-fibers from de-pectinated sugar beet pulp, they suggested removal of non-cellulosic impurities by bleaching process. Similarly, Ilyas *et al.* (2018)<sup>[21]</sup> reported temperature between these ranges corresponds to hemicellulose degradation and beginning of lignin degradation. Atiqah *et al.* (2019)<sup>[3]</sup> documented in their

study that both hemicellulose and lignin have amorphous structure, however, hemicellulose can be easily hydrolysed, while, lignin is composed of heavily linked higher molecular weight benzene-propane units, thus its decomposition requires higher temperature (Saurabh *et al.*, 2016)<sup>[56]</sup>. After this, another decomposition occurred between 360 °C and 480°C, peaking at 420°C. The high temperature reported in this study for thermal degradation may be linked to crystalline region of cellulose, which is known to improve the thermal stability of the lignocellulosic nature (Poletto *et al.*, 2014)<sup>[44]</sup>. The peaked scale recorded in this study is higher than 332 °C reported in Dingyuan *et al.* (2019)<sup>[8]</sup> for bleached walnut shells, it was further suggested that the wide range is associated with lignin elimination due to bleaching agent. Other studies such as Prakash *et al.* (2018) reported thermal decomposition of *Mentha arvensis* to have ranged between 250-400°C, while, Loof *et al.* (2016)<sup>[33]</sup> reported a range of 300-360°C and 230-315°C for soybean hull and maize straw respectively. Galiwango *et al.* (2019) opined that thermal decomposition of cellulose may occur at temperatures varying from 150-500 °C depending on its origin. It could be inferred from this study that the observed residual weight could correspond to the level of crystallinity, similar opinions have been reported in Ali *et al.* (2017). This culminated with the non-cellulosic contents that were further removed at temperature slightly above 600°C.

### Conclusion

In this study, cellulose was produced using a modified acid hydrolysis protocol, with *Caesalpinia bonduc* hard nutshells (CBHNS) as the basic material. The chemical analysis revealed that non-cellulosic impurities such as hemicellulose and lignin in the CBHNS were effectively removed by treatments protocols. Also, crystallinity index of 87.5% of the obtained cellulose implies the significant dissolution of amorphous material as seen using the SEM. The mass thermal degradation of matter at 420 °C and resulting residue's ability to endure high temperature is related to its high crystallinity. These observations in the obtained cellulose makes it better preferred as a biocompatible raw material for most industrial production. Furthermore, the CBHNS that is termed as an agro-waste may be repurposed for a better use such as cellulose production.

### References

1. Adeleke AE, Sangoremi A, Adegbite SA. Chemical Composition and Functional Properties of *Caesalpinia bonduc* and *Monodora myristica* Seed Flours. International Journal of Environment, Agriculture and Biotechnology. 2019; 4(1):10-14. <http://dx.doi.org/10.22161/ijeab/4.1.2>
2. Ali A, Asad MA, Fataneh B, Seyed MAR. Characterisation of Cellulose from Coffee Silverskin, International Journal of Food Properties. 2017; 20(11):2830-2843, DOI: 10.1080/10942912.2016.1253097.
3. Atiqah MSN, Gopakumar DA, Owolabi FAT, Pottathara YB, Samsul R, Sri Aprillia NA. Extraction of Cellulose Nanofibers via Eco-friendly Supercritical Carbon Dioxide Treatment Followed by Mild Acid Hydrolysis and the Fabrication of Cellulose

- Nanopapers. *Polymers*, 2019; 11:1813; doi:10.3390/polym11111813.
4. Billah MM, Islam R, Khatun H, Parvin S, Islam E, Anisul Islam SM, Mia AA. Antibacterial, Antidiarrhoeal, and Cytotoxic Activities of Methanol Extract and its Fractions of *Caesalpinia bonducella* (L.) Roxb Leaves. *BMC Complementary and Alternative Medicine*. 2013; 13:101-108. <http://www.biomedcentral.com/1472-6882/13/101>.
  5. Chumee J, Seeburin D. Cellulose Extraction from Pomelo Peel: Synthesis of Carboxymethyl Cellulose. *International Journal of Chemical, Nuclear, Metallurgical and Materials Engineering*. 2014; 8(5):401-403.
  6. De Menezes AJ, Siqueira G, Curvelo AAS, Dufresne A. Extrusion and Characterization of Functionalized Cellulose Whiskers Reinforced Polyethylene Nanocomposites. *Polymer*. 2009; 50:4552-4563.
  7. Deepa B, Abraham E, Cordeiro N, Mozetic M, Mathew AP, Oksman K, Faria M. Utilization of Various Lignocellulosic Biomass for the Production of Nanocellulose: A Comparative Study. *Cellulose*. 2015; 22:1075-1090.
  8. Dingyuan Z, Yangyang Z, Yunfeng G, Jinqian, Y. Isolation and Characterization of Nanocellulose with a Novel Shape from Walnut (*Juglans regia* L.) Shell Agricultural Waste. *Polymers*. 2019; 11:1130-1144. doi:10.3390/polym11071130.
  9. Elanthikkal S, Gopalakrishnapanicker U, Varghese S, Guthrie JT. Cellulose Microfibrils Produced from Banana Plant Wastes: Isolation and characterization. *Carbohydrate Polymer*. 2010; 80:852-859. <https://doi.org/10.1016/j.carbpol.2009.12.043>.
  10. Elazzouzi-Hafraoui S, Nishiyama Y, Putaux J, Heux L, Dubreuil F, Rochas C. The Shape and Size Distribution of Crystalline Nanoparticles Prepared by Acid Hydrolysis of Native Cellulose. *Bio-macromolecules*. 2008; 9:57-65.
  11. Esmail FA, Ghazy MB, Owda ME, El-Zawawy WK, Al-Maadeed MA. Extraction and Characterization of Nanocellulose obtained from Sugarcane Bagasse as Agro-Waste. *Journal of Advanced Chemistry*. 2018; 12:4256-4264.
  12. Flauzino WP, Silvério HA, Dantas NO, Pasquini D. Extraction and Characterization of Cellulose Nanocrystals from Agro-industrial Residue-Soy hulls. *Industrial Crops and Products*. 2013; 42:480-488. <http://dx.doi.org/10.1016/j.indcrop.2012.06.041>.
  13. Galiwango E, Abdel Rahman NS, Al-Marzouqi AH, Abu-Omar MM, Khaleel AA. Isolation and Characterization of Cellulose and  $\alpha$ -Cellulose from Date Palm Biomass. *Heliyon*. 2019; 5:e02937.
  14. Gao X, Chen KL, Zhang H, Peng LC, Liu QX. Isolation and Characterization of Cellulose Obtained from Bagasse Pith by Oxygen-Containing Agents. *Bio-Resources*. 2014; 9(3):4094-4107. <http://dx.doi.org/10.15376/biores.9.3.4094-4107>.
  15. González I, Alcalà M, Chinga-Carrasco G, Vilaseca F, Boufi S, Mutjé P. From Paper to Nanopaper: Evolution of Mechanical and Physical Properties. *Cellulose*. 2014; 21:2599-2609.
  16. Haafiza MKM, Hassana A, Zakariac Z, Inuwaaa IM. Isolation and Characterization of Cellulose Nanowhiskers from Oil Palm Biomass Microcrystalline Cellulose. *Carbohydrate Polymers*. 2014; 103:119-125.
  17. Harini K, Ramya K, Sukumar M. Extraction of Nano Cellulose Fibers from the Banana Peel and Bract for Production of Acetyl and Lauroyl Cellulose. *Carbohydrate Polymer*. 2018; 201:329-339.
  18. Henrique MA, Silvério HA, Flauzino Neto WP, Pasquini D. Valorization of an Agro-Industrial Waste, Mango Seed, by the Extraction and Characterization of its Cellulose Nanocrystals. *Journal of Environmental Management*. 2013; 121:202-209.
  19. Hernandez CC, Ferreira FF, Rosa DS. X-ray Powder Diffraction and other Analyses of Cellulose Nanocrystals Obtained from Corn Straw by Chemical Treatments. *Carbohydrate Polymer*. 2018; 193:39-44.
  20. Hsieh YL. Cellulose Nanocrystals and Self-Assembled Nanostructures from Cotton, Rice Straw and Grape Skin: A Source Perspective. *Journal of Material Science*. 2013; 48:7837-7846.
  21. Ilyas RA, Sapuan SM, Ishak MR. Isolation and Characterization of Nanocrystalline Cellulose from Sugar Palm Fibres (*Arenga Pinnata*). *Carbohydrate Polymers*. 2018; 181:1038-1051.
  22. Inamochi T, Funahashi R, Nakamura Y, Saito T, Isogai, A. Effect of Coexisting Salt on TEMPO-Mediated Oxidation of Wood Cellulose for Preparation of Nanocellulose. *Cellulose*. 2017; 24:4097-4101.
  23. Johar N, Ahmad I, Dufresne A. Extraction, Preparation and Characterization of Cellulose Fibres and Nanocrystals from Rice Husk. *Industrial Crops and Products*. 2012; 37(1):93-99.
  24. Jonoobi M, Khazaeian A, Tahir PM, Azry SS, Oksman K. Characteristics of Cellulose Nanofibers Isolated from Rubberwood and Empty Fruit Bunches of Oil Palm Chemo-mechanical Process. *Cellulose*. 2011; 18:1085-1095.
  25. Julie CCN, George N, Narayanankutty SK. Isolation and Characterization of Cellulose Nanofibrils from Arecanut Husk Fibre. *Carbohydrate Polymers*. 2016; 142:158-166. <http://dx.doi.org/10.1016/j.carbpol.2016.01.015>. PMID: 26917386.
  26. Kargarzadeh H, Ahmad I, Abdullah I, Dufresne A, Zainudin S, Sheltami R. Effects of Hydrolysis Conditions on the Morphology, Crystallinity, and Thermal Stability of Cellulose Nanocrystals Extracted from Kenaf Bast Fibers. *Cellulose*, 2012, 10. 1007/s10570-012-9684-6.
  27. Kaushik A, Singh M. Isolation and Characterization of Cellulose Nanofibrils from Wheat Straw using Steam Explosion Coupled with High Shear Homogenization. *Carbohydrate Research*. 2011; 346(1):76-85.
  28. Klemm D, Kramer F, Moritz S, Lindström T, Ankerfors M, Gray D, *et al.* Nanocelluloses: A New Family of Nature-Based Materials. *Angewandte Chemie International Edition*. 2011; 50:5438-5466.
  29. Kontturi E, Laaksonen P, Linder MB, Groschel AH, Rojas OJ, Ikkala O. Advanced Materials through Assembly of Nanocelluloses. *Advanced Material*. 2018; 30:39.
  30. Lavoine N, Desloges I, Dufresne A, Bras J. Micro fibril lated Cellulose-Its Barrier Properties and

- Applications in Cellulosic Materials: A Review. Carbohydrate Polymer. 2012; 90:735-764.
31. Li MC, Wu Q, Song K. Cellulose Nanoparticles as Modifiers for Rheology and Fluid Loss in Bentonite Water-Based Fluids. ACS Appl Mater Interfaces. 2015; 7:5009-5016. <https://doi.org/10.1021/acsam.15b00498>.
  32. Li M, Wang LJ, Li D, Cheng YL, Adhikari B. Preparation and Characterization of Cellulose Nanofibers from De-Pectinated Sugar Beet Pulp. Carbohydrate Polymers. 2014; 102:136-143.
  33. Loof D, Hiller M, Oschkinat H, Koschek K. Quantitative and Qualitative Analysis of Surface Modified Cellulose Utilizing TGA-MS. Materials. 2016; 9(6):415.
  34. Lu P, Hsieh YL. Cellulose Isolation and Core-Shell Nanostructures of Cellulose Nanocrystals from Chardonnay Grape Skins. Carbohydrate Polymer. 2012; 87:2546-2553. <https://doi.org/10.1016/j.carbpol.2011.11.023>.
  35. Manikandaselvi S, Vadivel V, Brindha P. Studies on Nutraceutical Properties of *Caesalpinia bonducella* L.: An Indian Traditional Medicinal Plant. Research Journal of Medicinal Plant. 2016; 10:127-139. DOI: 10.3923/rjmp.2016.127.139
  36. Marett J, Aning A, Foster EJ. The Isolation of Cellulose Nanocrystals from Pistachio Shells via Acid Hydrolysis. Industrial Crops and Products. 2017; 109:869-874.
  37. Moreau C, Villares A, Capron I, Cathala B. Tuning Supramolecular Interactions of Cellulose Nanocrystals to Design Innovative Functional Materials. Industrial Crops and Product. 2016; 93:96-107.
  38. Nascimento DM, Almeida JS, Dias AF, Figueirêdo MCB, Moraise JPS, Feitosa JPA, *et al.* A Novel Green Approach for the Preparation of Cellulose Nanowhiskers from White Coir. Carbohydrate Polymers. 2014; 110:456-463.
  39. Nazeerullah K, Sunil K, Pal SR, Neelam D. A Pharmacognostic and Pharmacological Overview on *Caesalpinia bonducella*. Research Journal of Pharmaceutical, Biological and Chemical Sciences. 2012; 3:480-496.
  40. Nazir MS, Wahjoedi BA, Yussof AW, Abdullah MA. Green extraction and Characterization of cellulose fibers from Oil Palm Empty Fruit Bunch. 2nd International Conference on Process Engineering and Advanced Materials (ICPEAM2012), 2012.
  41. Ogunlana OO, Kim HS, Wataya Y, Olagunju JO, Akindahunsi AA, Tan NH. Antiplasmodial Flavonoid from Young Twigs and Leaves of *Caesalpinia bonduc* (Linn) Roxb. Journal of Chemical and Pharmaceutical Research. 2015; 7:931-937.
  42. Oliveira FBD, Brasc J, Pimentaa MTB, Curveloa AADS, Belgacem MN. Production of Cellulose Nanocrystals from Sugarcane Bagasse Fibers and Pith. Industrial Crops and Products. 2016; DOI: 10.1016/j.indcrop.2016.04.064.
  43. Pillai PG, Suresh P, Mishra G. Induction of Apoptosis and Inhibitory Potential of the Methanol Extract of *Caesalpinia bonduc* (L.) Roxb against Breast Cancer. Annals Plant Science. 2013; 2:284-291.
  44. Poletto M, Ornaghi Júnior HL, Zattera AJ. Native Cellulose: Structure, Characterization and Thermal Properties. Materials (Basel). 2014; 7:6105-6119.
  45. Pomeranz, Cliffon. Food Analysis Theory and Practices. Westport, L.F, Avi publishing company, 1981, 17.
  46. Prakash O, Naik S, Naik M, Katiyar R, Kumar D, Maji D, *et al.* Novel Process for Isolation of Major Bio-polymers from *mentha arvensis* Distilled Biomass and Saccharification of the Isolated Cellulose to Glucose. Industrial Crops and Production. 2018; 119:1-8.
  47. Rachtanapun P, Luangkamin S, Tanprasert K, Suriyatem R. Carboxymethyl Cellulose Film from Durian Rind. LWT - Food Science and Technology. 2012; 48:52-58.
  48. Rajinipriya M, Nagalakshmaiah M, Robert M, Elkoun S. Importance of Agricultural and Industrial Waste in the Field of Nanocellulose and Recent Industrial Developments of Wood Based Nanocellulose: A Review. ACS Sustainable Chemistry and Engineering. 2018; 6:2807-2828.
  49. Ranganagowda RPG, Kamath SS, Bennehalli B. Extraction and Characterization of Cellulose from Natural Areca Fiber. Material Science Research India. 2019; 16(1):86-93.
  50. Robles E, Fernandez-Rodriguez J, Barbosa AM. *et al.* Production of Cellulose Nanoparticles from Blue Agave Waste Treated with Environmentally Friendly Processes. Carbohydrate Polymers. 2018; 183:294-302.
  51. Rosa SML, Rehman N, de Miranda MIG, Nachtigall SMB, Bica CID. Chlorine Free Extraction of Cellulose from Rice Husk and Whisker Isolation. Carbohydrate Polymer, 87(2):1131-1138.
  52. Sacui IA, Nieuwendaal RC, Burnett DJ, Stranick SJ, Jorfi M, Weder C, *et al.* Comparison of the Properties of Cellulose Nanocrystals and Cellulose Nanofibrils Isolated from Bacteria, Tunicate, and Wood Processed Using Acid, Enzymatic, Mechanical, and Oxidative Methods. ACS Applied Materials and Interfaces. 2014; 6:6127-6138.
  53. Saelee K, Yingkamhaeng N, Nimchua T, Sukyai P. An Environmentally Friendly Xylanase-Assisted Pretreatment for Cellulose Nanofibrils Isolation from Sugarcane Bagasse by High-Pressure Homogenization. Industrial Crops and Production. 2016; 82:149-160.
  54. Sandhia KG, Bindu AR. Phytochemical, Anti-Inflammatory and in vitro Anticancer Activities of *Caesalpinia bonduc* Stem Bark. International Journal of Pharmaceutical Science Research. 2015; 6:50-56.
  55. Saraiva Morais JP, Rosa MDF, Moreira de Souza Filho, MDS, Nascimento LD, do Nascimento DM, *et al.* Extraction and Characterization of Nanocellulose Structures from Raw Cotton Linter. Carbohydrate Polymer. 2013; 91:229-235.
  56. Saurabh CK, Dungani R, Owolabi AF, Atiqah NS, Zaidon A, Aprilia NAS. Effect of Hydrolysis Treatment on Cellulose Nanowhiskers from Oil Palm (*Elaeis guineensis*) Fronds: Morphology, Chemical, Crystallinity, and Thermal Characteristics. Bio-Resources. 2016; 11:6742-6755.
  57. Segal L, Creely JJ, Marin AE, Conrad CM. An Empirical Method for Estimating the Degree of

- Crystallinity of Native Cellulose using the X-ray Diffractometer. *Textile Research Journal*. 1959; 29:786-794.
58. Shivaprakash P, Balaji KS, Lakshmi GM, *et al*. Methanol Extract of *Caesalpinia bonducella* Induces Apoptosis via Up-Regulation of Bax and Activation of PARP in Ehrlich Ascites Tumor Cells. *Med Aromat Plants*. 2016; 5:2167-0412.
59. Song K, Zhu X, Zhu W, Li X. Preparation and Characterization of Cellulose Nanocrystal Extracted from *Calotropis procera* Biomass. *Bio-resources and Bioprocessing*. 2019; 6:45. <https://doi.org/10.1186/s40643-019-0279-z>.
60. Song K, Zhu W, Li X, Yu Z. A Novel Mechanical Robust, Self-Healing and Shape Memory Hydrogel Based on PVA Reinforced by Cellulose Nanocrystal. *Material Letters*. 2020; 260:126884.
61. Sukhdev KA, Dhondiram MY, Khalure PR, Balasaheb CN. Antifertility Activity of Root Bark of *Caesalpinia bonduc* Linn. Roxb in Female Albino Rats. *Pharmacology online*. 2011; 3:34-41.
62. Wan C, Lu Y, Jiao Y, Jin C, Sun Q, Li J. Ultralight and Hydrophobic Nanofibrillated Cellulose Aerogels from Coconut Shell with Ultrastrong Adsorption Properties. *Journal of Applied Polymer Science*, 2015, 132.
63. Ye C, Malak ST, Hu K. Cellulose Nanocrystal Microcapsules as Tunable Cages for Nano-and Micro-particles. *ACS Nano*. 2015; 9:10887-10895. [https://doi.org/10.1021/acsnano.5b03905](https://doi.org/10.1021/acs.nanolett.5b03905)
64. Zoroddu MA, Aaseth J, Crisponi G, Medici S, Peana M, Nurchi VM. The Essential Metals for Humans: A Brief Overview. *Journal of Inorganic Biochemistry*. 2019; 195:120-129.
64. Elsayed AN, Badawy AI, Sarhan M, Abdel-Aziz A. *Haemonchus longistipes* Railliet & Henry, 1909 (Nematoda, Trichostrongyloidea) from dromedary, *Camelus dromedarius* (Artiodactyla, Camelidae). Egypt: Prevalence and comparative assessment of vulvar morphology. *Int. J. Biol. Res.* 2019;4(3):107-12.